

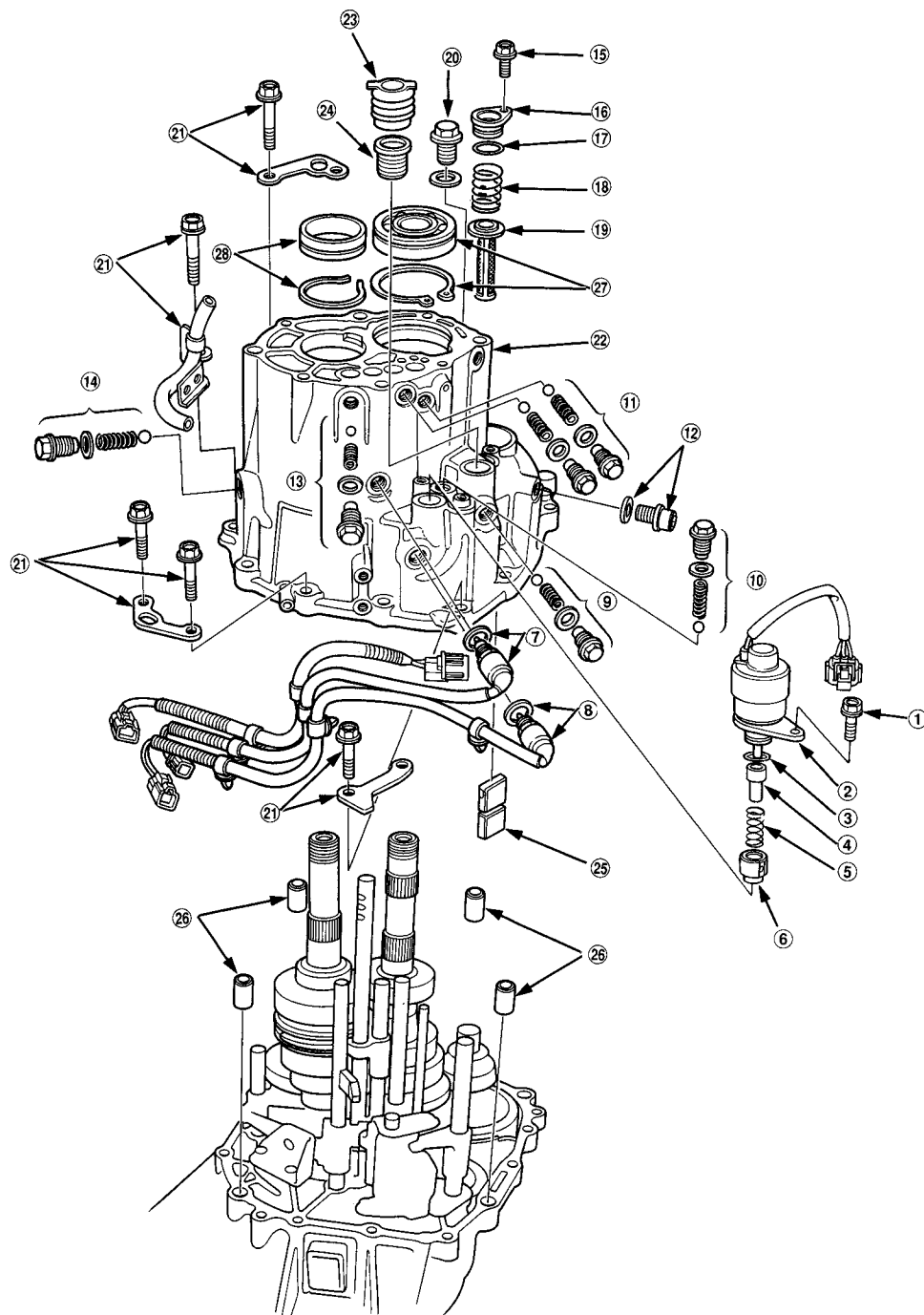
Transmission Housing

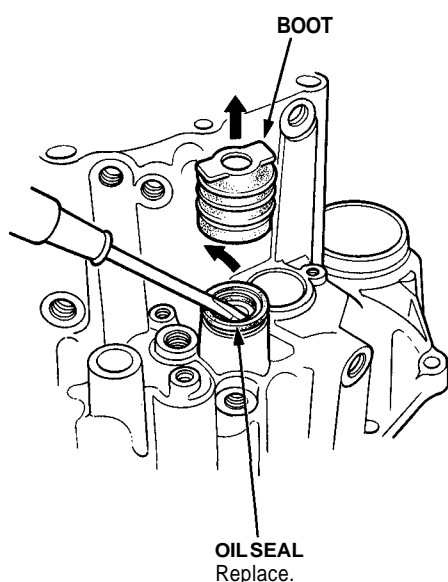
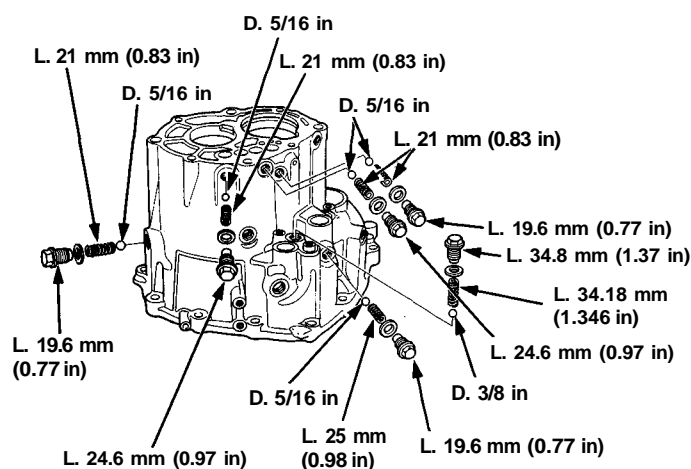
Removal

NOTE:

- Replace all sealing washers, O-rings and oil seals.
- Always clean the magnet (25) and oil pump strainer (19).

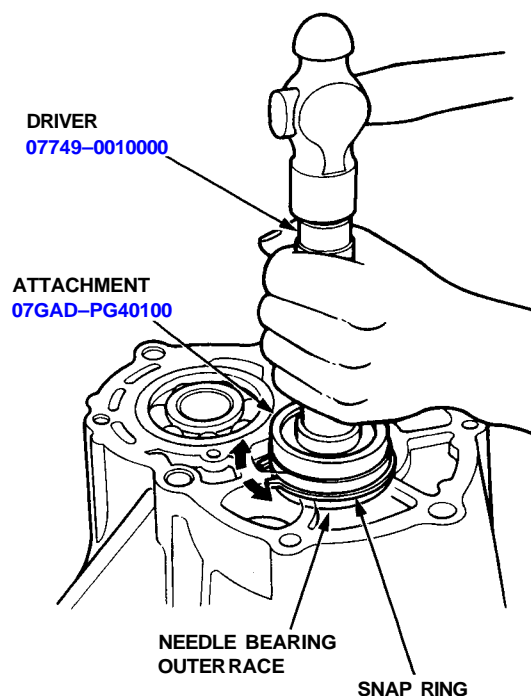
1. Remove the transmission housing following the numbered sequence.





Mainshaft Side:

1. Remove the needle bearing outer race while expanding the snap ring using the special tools as shown.



Countershaft Side:

1. Remove the ball bearing while expanding the snap ring using the special tools as shown.

